



**Sumner-Cowley
Electric Co-op, Inc.**

Building on our past. Lighting the way to the future.

P.O. Box 220, Wellington, KS 67152
888-326-3356
www.sucocoop.com

**SUMNER-COWLEY
ELECTRIC COOPERATIVE**

NEWS FROM THE **WHEAT CAPITAL**

SUMNER-COWLEY ELECTRIC CO-OP, INC.

BOARD OF DIRECTORS

John Schon
President, District 7

Keith Leddy
Vice President, District 4

Jeff Swanson
Secretary-Treasurer, District 2

John Beard
Director, District 3

Craig Knudsen
Director, District 1

Jim McMullin
Director, District 5

Gabe Schlickau
Director, District 6

STAFF

Coni Adams
CEO

Jordan Creed
Director of Operations

Stacy Wiley
Director of Finance

Casha Short
Member Engagement and
Creative Services

LIKE US ON FACEBOOK

Join us on Facebook for updates from Sumner-Cowley Electric. Simply search for Sumner-Cowley Electric Cooperative and click the "like" button.



FROM THE CEO

Understanding Factors That Impact Your Energy Bills

February brings some of the coldest weather of the year, and as our home heating systems work harder and longer to keep us warm, we typically see higher energy bills.

There are a few key factors that affect electricity prices, as well as a few ways you can make a meaningful impact on home energy savings.

When you receive your monthly bill from Sumner-Cowley Electric, you're provided with a summary of how much electricity you used during the billing cycle. You can even see how electricity use may have spiked on days when you used more electricity, such as a particularly chilly day or when relatives were staying with you.

But you might be surprised to learn that beyond your monthly energy consumption, there are external factors that can impact the cost of electricity.

FUEL PRICES

SCEC purchases electricity from our power generation partner, Kansas Electric Power Cooperative (KEPCo), at a wholesale cost, then we deliver that power to our members. The cost of generating and transmitting electricity from our generation partner accounts for a significant portion of

the cost to provide electric service to homes and businesses — and the cost of fuels that are used to generate that electricity, such as natural gas and coal, fluctuate based on supply and demand. While these fluctuations can impact the cost of electricity, we work closely with KEPCo to plan and help stabilize electricity prices for our members.

EXTREME WEATHER

While we can't control the weather, we can review weather patterns and forecasts to prepare for times of extreme cold or heat, when we know the demand for electricity will increase. But when temperatures become extremely cold and the demand for electricity spikes, the price of electricity can also increase.

INFRASTRUCTURE AND EQUIPMENT

To cover the costs associated with providing electricity to your home or business, Sumner-Cowley members pay a monthly facility charge. This flat monthly fee ensures the cost of



Coni Adams

Continued on page 12D ►

Graffiti Paintball & Airsoft

YEAR-ROUND OUTDOOR ADVENTURE & EXCITEMENT FOR ALL

Looking for a way to get your kids away from screens? Or maybe you're craving a new outdoor adventure? Look no further than Graffiti Paintball & Airsoft. Conveniently located just off Highway 81, southwest of the Kansas Star Casino, you'll find nearly 30 acres with seven unique paintball and airsoft courses.

Owned and operated by SCEC members **JIMMY AND SHANA GLOVER**, Graffiti began as a fun hobby for Jimmy and his friends. It quickly turned into a full-fledged business. The couple had the perfect spot along the Ninescah River, combining a love for the outdoors with a strong work ethic to create "Graffiti Paintball" back in 2008. As word spread, the operation grew, adding more courses and fields. In 2021, airsoft was introduced, bringing even more excitement and attracting new visitors.

Paintball and airsoft are thrilling outdoor games where players try to "tag" their opponents in a safe, competitive way. In paintball, players use markers that shoot paint-filled balls. If you get hit, you're out. In airsoft, players use markers that shoot small plastic beebees, and the goal is to hit your opponent without causing harm. Both games require teamwork, strategy and quick thinking, and they can be played on wooded trails or man-made obstacle courses.

As interest in these sports grows, teams are popping up across the country. But no need to worry if



ABOVE LEFT: Think you have what it takes to compete? Test your skills in Graffiti's paintball tournaments with several planned for this year!



ABOVE RIGHT: Take part in a paintball tournament or get a feel for the sport by watching from one of Graffiti's visitor picnic tables.

you're new to the game. As Shana says, "Have fun with it. It's just a game!"

Whether you're a first-timer or an experienced player, Graffiti Paintball & Airsoft welcomes everyone to enjoy their fields. With picnic tables and gathering areas set safely away from the courses, visitors are encouraged to pack a lunch and their lawn chairs and make a day of it.

Graffiti is open year-round on weekends, and during the week by appointment. They host team tournaments, birthday parties, church groups, solo outings, and more. When you arrive, you can rent a marker or bring your own. Dressing in layers is recommended not only to ease the impact of the beebees and paint, but also to help keep you warm while you're on the move. The more active you are, the easier it is to stay comfortable,

even in colder weather. Safety is a top priority: Face masks are required (and available for rent), and barrel plugs are used until you're on the course and ready to play. There's a safety briefing before each game, and Jimmy or Shana are always happy to share their tips and knowledge.

For more information, visit Graffiti's active Facebook page or their website at www.graffitik.com. Throw on some layers, take a short drive and get ready for an afternoon of adventure, adrenaline and fun!

A paintball player takes shelter behind a metal structure located on one of the multiple courses at Graffiti Paintball and Airsoft.



STAY SAFE on Winter Roads

Winter months can bring snow, ice and windy conditions, creating hazards for drivers. It is important to be prepared in case there is an accident.

BEFORE A WINTER STORM

Perform vehicle seasonal maintenance to ensure:

- ▶ Batteries are charged.
- ▶ Tires have sufficient tread.
- ▶ Spare tire is inflated.
- ▶ Jumper cables are in good condition.
- ▶ A winterized car emergency kit is on hand.
- ▶ Windshield wipers work.
- ▶ Headlights, brake lights and turn signals work.
- ▶ Vehicle has at least a half tank of gas.

PREVENT FROSTBITE AND HYPOTHERMIA

If you are stranded in your car after an accident, observe the following precautions:

- ▶ Do not stay in one position for too long.
- ▶ Stay awake.
- ▶ Do not overexert yourself to avoid strain on your heart.
- ▶ Watch for signs such as a change in skin color, numbness, shivering, slurred speech, loss of coordination or confusion.

WINTER STORMS AND POWER LINES

Always treat sagging and downed power lines as energized and dangerous. Keep at least 50 feet away from the area. If your vehicle hits a power pole, stay inside. Contact 911 and wait for the power to be shut off by utility workers. If your vehicle is on fire, exit the vehicle landing with both feet together and hop away at least 50 feet.

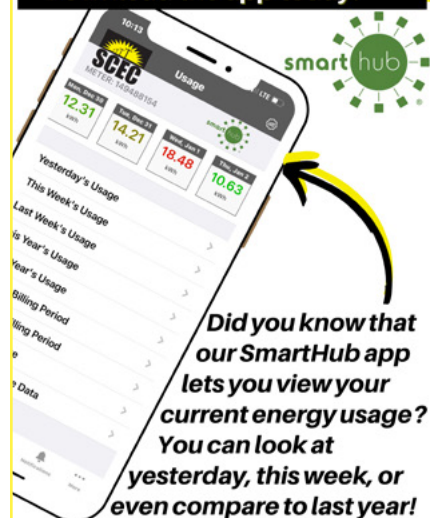
ENERGY EFFICIENCY TIP OF THE MONTH

If you have a home office, look for opportunities to save energy in your workspace. Use Energy Star-rated equipment, which consumes up to 50% less energy than standard models. Set equipment like printers and scanners to automatically switch to sleep or energy-saver mode when not in use. Use efficient lamps for task lighting. Replace any older bulbs with energy-saving LEDs.

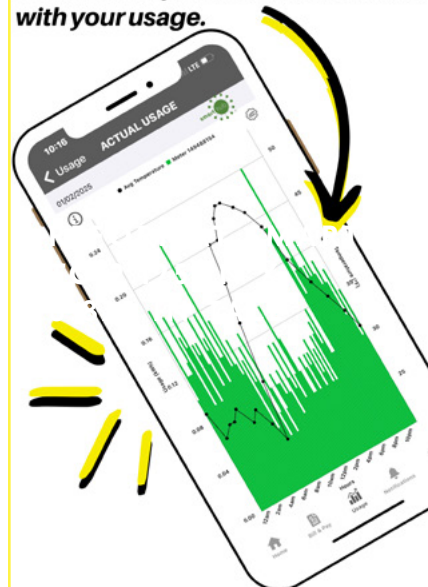
SOURCE: ENERGY.GOV



Download the app today!



SmartHub will also show you the outdoor temperature in correlation with your usage.



**Sumner-Cowley
Electric Co-op, Inc.**

SCEC IS HOSTING A PHOTO CONTEST!

The May 2025 issue of Kansas Country Living magazine will feature a special edition cover wrap announcing our annual meeting. The winner of this competition will have their photo featured as the cover wrap image. We invite all entries to reflect the theme of “Empowering the Future.” We can’t wait to see what that looks like for you!

**Winner receives a
\$50 bill credit!**

All eligible entries must be received by the end of business on **Friday, Feb. 28, 2025**. Must be a member of Sumner-Cowley Electric Cooperative, Inc. to be eligible.



SUBMIT ENTRIES TO:
CASHAS@SUCOCOOP.COM

Understanding Factors That Impact Your Energy Bills *Continued from page 12A ►*

equipment, materials, labor and daily operations are covered for all members in our service territory. To ensure the reliable service you expect and deserve, we must maintain the local grid, including power lines, substations and other essential equipment.

ENERGY POLICY AND REGULATIONS

Federal energy policies and regulations can have a profound impact on electricity costs. As energy generation shifts to the use of more renewable sources and stricter regulations for traditional, always-available fuel sources, such as natural gas and coal plants, costly upgrades and technologies must be constructed and deployed. These additional costs are ultimately passed to consumers.

U.S. power consumption is expected to double by 2050. Across the country, electric cooperatives are working with members of Congress to advocate for smart energy policies that reliably

power our local communities. We are urging the Trump Administration to take concrete steps to repeal the EPA's power plant rule and bolster the long-term reliability of the nation's grid.

YOU HAVE CONTROL

While many of these external factors that impact electricity costs are out of our control, we all have the power to manage our energy use at home. The most effective way to lower use is thermostat management. Since heating and cooling account for a major portion of home energy use, adjusting the thermostat to the lowest comfortable setting can help you save energy and money. Remember to service your heating and cooling system annually and replace dirty filters as needed. Be sure to seal air leaks around windows, doors and other areas where gaps are possible. This will help your heating and cooling system work less and improve the overall comfort of your home.

You can also take control of your

“While many of these external factors that impact electricity costs are out of our control, we all have the power to manage our energy use at home.”

demand by spreading out the use of major appliances in your home. Start your dishwasher in the morning, the washing machine at lunch, and the clothes dryer in the evening. Using the same amount of energy, but spreading it out evenly versus running everything at once lowers the demand put on the grid and can in turn lower the demand on your electric bill.

Sumner-Cowley Electric Cooperative is your local energy partner. As always, we will continue working diligently to provide you with reliable power at an affordable cost.

Celebrating 25 Years of Dedication Adams Marks a Milestone at SCEC



Coni Adams

This February marks a major milestone for **CONI ADAMS**, CEO of Sumner-Cowley Electric Cooperative (SCEC). Adams is celebrating 25 years of hard work, dedication and passion for rural Kansas.

Adams has worn just about every hat at SCEC, from receptionist to billing clerk to HR, before stepping into the CEO role.

Her journey hasn't been easy. She worked full time while also taking night classes and being a mom and wife. There were times when she juggled two jobs to make it all work, but through it all, her commitment to the cooperative world and its members never wavered.

If you've met her, you know she has the innate ability to connect with people. Whether it's over the phone, at the statehouse in Topeka, or in a one-on-one conversation,

Adams has a way of making you feel heard and valued. Her cut-to-the chase personality and quick wit have made her a beloved leader and a strong advocate for SCEC members.

Through all the ups and downs, Adams has stayed true to the heart of what it means to live and work in rural Kansas. It's not just about running a cooperative — it's about supporting our entire service area, helping our neighbors, and making sure every member gets the service they deserve.

Her 25 years at SCEC are a testament to that spirit, and as the first female CEO of SCEC, she celebrates a personal milestone, and paves new paths and opens doors for future generations of leaders.

According to Adams “putting people before profits is my passion,” a belief that aligns perfectly with SCEC's commitment to prioritizing our members' needs.

Here's to many more years of leadership, laughter and commitment to our cooperative family. Thank you, Coni, for everything you do!